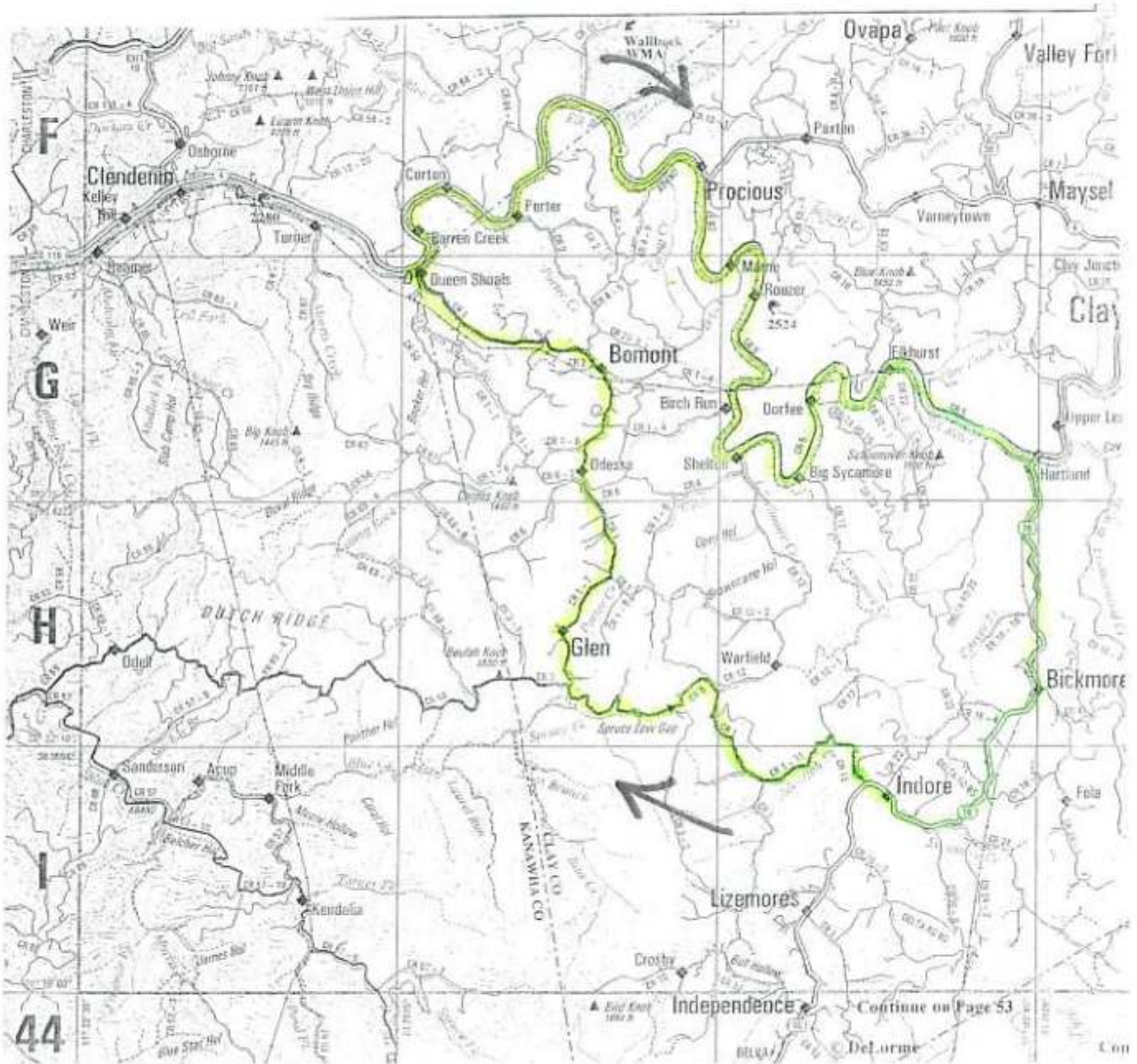


# Bickmore Road Ride

## 48 Miles – Class B

Starts at Queen Shoals near Clendenin

Exit 19 off I-79, right 2.6 miles on 119 South, left on WV 4 East  
4 miles, right across Queen Shoals bridge to church on right



# Bickmore Road Ride

## 48 Miles – Class B

Starts at Queen Shoals near Clendenin

Exit 19 off I-79, right 2.6 miles on 119 South, left on WV 4 East  
4 miles, right across Queen Shoals bridge to church on right

- |      |      |    |   |
|------|------|----|---|
| 0.0  | 0.0  | L  | Out of parking lot  |
| 0.1  | 0.1  | R  | WV 4 East (unmarked)(STOP)(T)   |
| 8.6  | 8.7  | R  | Elkhurst Rd/CR 5  |
| 14.5 | 23.2 | R  | WV 16 South (STOP)  |
| 3.6  | 26.8 |    | Sunoco on right (store). Regroup here.<br>2.3 mile gradual climb ahead. |
| 4.7  | 31.5 | R  | Big Sycamore Rd/CR 12<br>DO NOT MISS                                    |
| 1.1  | 32.6 | BL | After crossing bridge. Start 6.5 mile<br>gradual climb                  |
| 15.8 | 48.4 | L  | Into church parking lot   |